



SOUTH AUSTRALIAN ECONOMIC INDICATORS

EMBARGO: 11:30AM (CANBERRA TIME) TUES 1 FEB 2000

C O N T E N T S

	<i>page</i>
Notes	2
REVIEW	
South Australian overview	3
Selected features	4
TABLES	
List of tables	5
Statistical summary	6
State summary	8
State accounts	9
International accounts	10
Consumption and investment	14
Production	16
Prices	20
Labour force and demography	21
Income	24
Financial markets	25
ADDITIONAL INFORMATION	
Publications source index	26

- For further information about these and related statistics, contact Fiona Macgregor on Adelaide 08 8237 7305, or Client Services in any ABS office as shown on the back cover of this publication.

NOTES

FORTHCOMING ISSUES	<table border="0"> <thead> <tr> <th style="text-align: left;"><i>ISSUE</i></th> <th style="text-align: left;"><i>RELEASE DATE</i></th> </tr> </thead> <tbody> <tr> <td>March 2000</td> <td>1 March 2000</td> </tr> <tr> <td>April 2000</td> <td>3 April 2000</td> </tr> <tr> <td>May 2000</td> <td>1 May 2000</td> </tr> <tr> <td>June 2000</td> <td>1 June 2000</td> </tr> <tr> <td>July 2000</td> <td>3 July 2000</td> </tr> <tr> <td>August 2000</td> <td>1 August 2000</td> </tr> </tbody> </table>	<i>ISSUE</i>	<i>RELEASE DATE</i>	March 2000	1 March 2000	April 2000	3 April 2000	May 2000	1 May 2000	June 2000	1 June 2000	July 2000	3 July 2000	August 2000	1 August 2000
<i>ISSUE</i>	<i>RELEASE DATE</i>														
March 2000	1 March 2000														
April 2000	3 April 2000														
May 2000	1 May 2000														
June 2000	1 June 2000														
July 2000	3 July 2000														
August 2000	1 August 2000														
ABOUT THIS PUBLICATION	<p><i>South Australian Economic Indicators</i> is a monthly publication which contains the latest available data at the time of preparation for a range of statistical series that have been identified as indicators of economic activity in this State. In a number of cases the figures presented are preliminary and subject to revision in subsequent issues.</p>														
SYMBOLS AND OTHER USAGES	<table border="0"> <tr> <td>n.a.</td> <td>not available</td> </tr> <tr> <td>n.y.a.</td> <td>not yet available</td> </tr> <tr> <td>*</td> <td>subject to sampling variability too high for most practical purposes</td> </tr> <tr> <td>..</td> <td>not applicable</td> </tr> <tr> <td>0, 0.0</td> <td>nil, or rounded to zero</td> </tr> </table>	n.a.	not available	n.y.a.	not yet available	*	subject to sampling variability too high for most practical purposes	..	not applicable	0, 0.0	nil, or rounded to zero				
n.a.	not available														
n.y.a.	not yet available														
*	subject to sampling variability too high for most practical purposes														
..	not applicable														
0, 0.0	nil, or rounded to zero														
ROUNDING	<p>Where figures have been rounded, discrepancies may occur between sums of the component items and totals.</p>														
INFORMATION	<p>All data are original, unless otherwise stated. More detailed information on each series, including explanatory and technical notes, can be obtained from other Australian Bureau of Statistics publications or alternative data sources. To assist those seeking further information a source publication for each of the series has been referenced in the statistical summary and State summary.</p>														

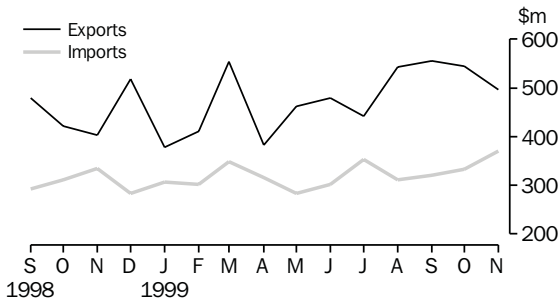
I. Crettenden
Regional Director
South Australia

OVERVIEW

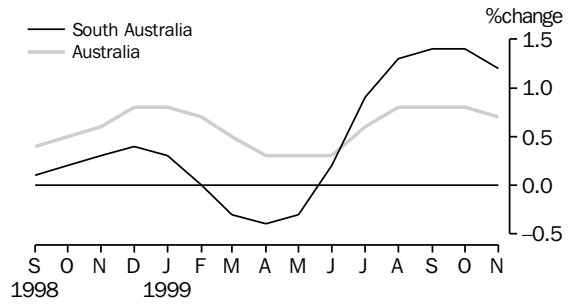
INTERNATIONAL ACCOUNTS	<p>The value of SA merchandise exports was \$496.0m for November 1999. Exports of motor vehicles and parts for November 1999 was a record \$140.8m.</p> <p>The value of merchandise imports released from Customs control in South Australia was \$369.6m in November 1999.</p>
CONSUMPTION AND INVESTMENT	<p>For the November 1999 quarter, the trend estimate of retail turnover in South Australia increased by 4.1% (to \$896.0m), thus surpassing the growth observed in other States. All industry groups in South Australia recorded increases for the fifth consecutive month. In original terms, retail turnover for November 1999 was \$915.0m, up 7.2% from the level of a year ago.</p> <p>In trend terms, new motor vehicle registrations fell by 8.2% (to 3,851) in the twelve months to November 1999. Passenger vehicle registrations fell by 11.3% (to 3,141) over the same period.</p> <p>The trend estimate for private new capital expenditure (in current prices) increased by 9.6% to \$55.0m in the September quarter of 1999. Over the same period, expenditure on buildings and structures rose by 5.2%, while equipment, plant and machinery spending increased by 10.7%.</p>
PRODUCTION	<p>The trend estimate of building approvals for private sector housing has increased for the eleventh consecutive month. The level at November 1999 (764) is 43.1% higher than that of a year ago.</p>
PRICES	<p>The Consumer Price Index (all groups) in Adelaide increased by 1.2% to 125.1 in the September quarter of 1999, and by 1.7% over the level of twelve months ago. The main contributors to the recent quarterly growth were Transportation (up by 4.4%) and Housing (2.4%).</p>
LABOUR FORCE AND DEMOGRAPHY	<p>The trend estimate of employed persons in South Australia has increased since July 1998. The estimate for December 1999 (675,300) is 3.0% higher than the level of 12 months ago (655,400).</p> <p>The trend estimate of the unemployment rate for South Australia, while generally decreasing since July 1998, has settled at 8.2% in recent months. The current level is considerably lower than the 9.4% recorded in December 1998.</p>
FINANCIAL MARKETS	<p>The trend estimate of the value of new housing commitments (excluding alterations and additions) increased by 4.1% in October, with the rate of growth having declined over recent months. In seasonally adjusted terms, the value rose by 14.1% to \$404.0m, or 61.0% higher than the level of a year ago.</p>

SELECTED FEATURES

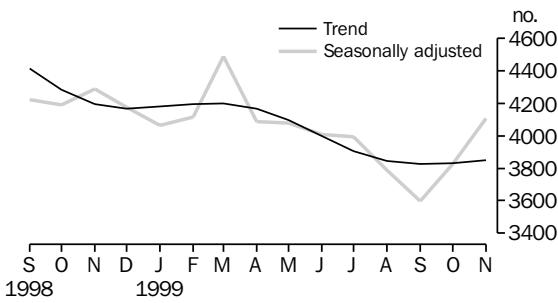
MERCHANDISE EXPORTS AND IMPORTS



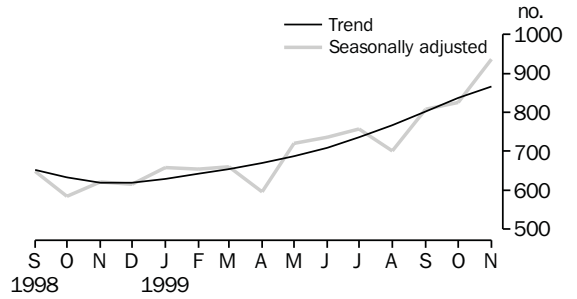
RETAIL TURNOVER: TREND



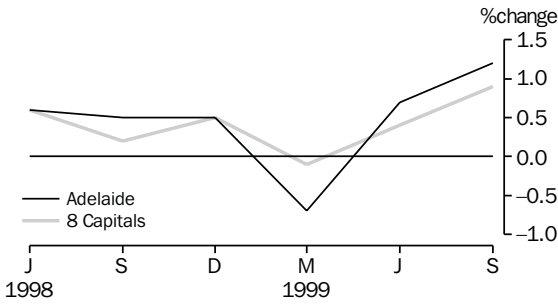
NEW MOTOR VEHICLE REGISTRATIONS



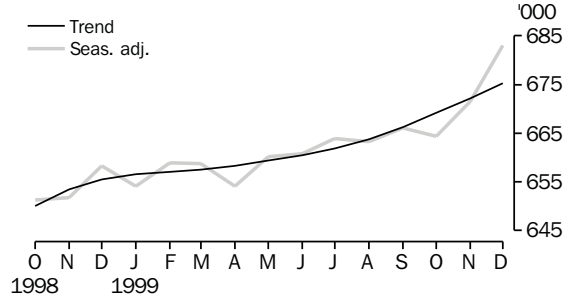
DWELLING UNITS APPROVED



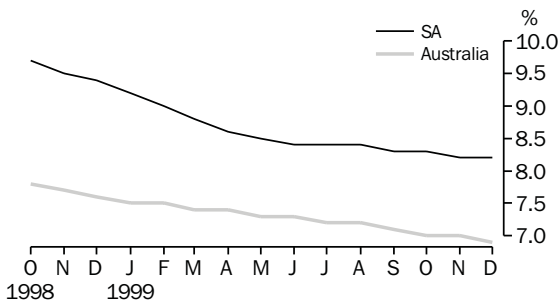
CONSUMER PRICE INDEX



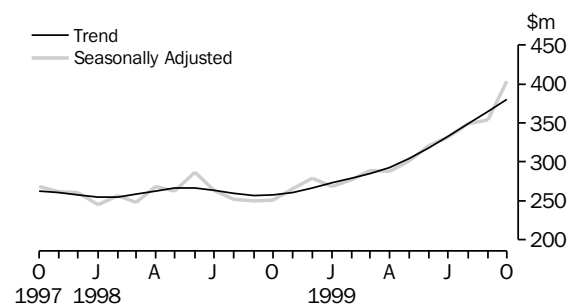
EMPLOYED PERSONS



UNEMPLOYMENT RATE: TREND



SECURED HOUSING FINANCE COMMITMENTS (a)



(a) Excludes alterations and additions. Includes refinancing.

LIST OF TABLES

			Page
STATISTICAL SUMMARY	1	Statistical summary	6
	2	State summary	8
STATE ACCOUNTS	3	State accounts at current prices	9
	4	State accounts at chain volume measures	9
INTERNATIONAL ACCOUNTS	5	Merchandise exports, by selected commodity group	10
	6	Merchandise exports, by selected countries	11
	7	Merchandise exports, by industry of origin	12
	8	Merchandise imports, by selected commodity group	13
CONSUMPTION AND INVESTMENT	9	Turnover of retail establishments, by industry—trend	14
	10	New motor vehicle registrations, by type of vehicle	14
	11	Actual private new capital expenditure, by selected industry and type of asset	15
	12	Tourist accommodation	15
PRODUCTION	13	Building approvals	16
	14	Building commencements	17
	15	Value of building work done and completed during period	18
	16	Production, livestock products and selected commodities	19
PRICES	17	Consumer price index, by group—Adelaide	20
LABOUR FORCE AND DEMOGRAPHY	18	Estimated resident population and components of population change	21
	19	Births, deaths, marriages and divorces	21
	20	Civilian labour force status	22
	21	Civilian labour force, unemployment and participation rates	23
INCOME	22	Average weekly earnings of employees	24
FINANCIAL MARKETS	23	Secured housing finance commitments	25
	24	Finance commitments	25

Indicator	Period	South Australia			Australia			SA as a % of Aust.	Source index
		Number	% change from		Number	% change from			
			Previous period	Same period previous year		Previous period	Same period previous year		
State accounts									
Domestic final demand									
Current prices trend (\$m)	Sep qtr 99	10 596	2.0	3.6	154 971	1.2	5.4	6.8	(1)
Chain volume measures trend (\$m)	Sep qtr 99	10 348	1.6	2.4	152 065	1.0	4.5	6.8	(1)
Private final consumption expenditure									
Current prices trend (\$m)	Sep qtr 99	6 453	0.8	2.5	90 622	1.2	5.5	7.1	(1)
Chain volume measures trend (\$m)	Sep qtr 99	6 290	0.2	0.8	88 704	0.9	4.2	7.1	(1)
Private gross fixed capital formation									
Current prices trend (\$m)	Sep qtr 99	1 640	4.9	-2.3	29 374	0.5	2.4	5.6	(1)
Chain volume measures trend (\$m)	Sep qtr 99	1 620	5.2	-1.2	29 206	1.2	3.9	5.5	(1)
Compensation of employees									
Current prices trend (\$m)	Sep qtr 99	4 987	1.3	5.5	73 780	1.0	4.9	6.8	(1)
International accounts									
Exports (\$m)	Nov 99	496.0	-8.9	23.3	7 931.6	9.0	15.5	6.3	(2)
Imports (\$m)	Nov 99	369.6	11.1	10.5	9 669.6	-5.3	13.3	3.8	(2)
Consumption and investment									
Retail turnover									
Current prices original (\$m)	Nov 99	915.0	1.9	7.2	12 378.9	1.6	8.4	7.4	(3)
Current prices trend (\$m)	Nov 99	896.0	1.2	6.3	12 130.9	0.7	7.7	7.4	(3)
1997-98 chain volume measures (\$m)	Sep 99	2 453.9	4.8	2.5	33 890.0	3.7	6.1	7.2	(3)
New motor vehicle registrations									
Original (no.)	Nov 99	4 335	18.5	-3.1	65 858	15.8	-2.9	6.6	(4)
Trend (no.)	Nov 99	3 852	0.5	-8.2	60 659	0.0	-8.6	6.4	(4)
Private new capital expenditure									
Current prices original (\$m)	Sep qtr 99	644	27.7	6.8	10 628	0.0	-8.4	6.1	(5)
Current prices trend (\$m)	Sep qtr 99	627	9.6	-6.8	10 639	-0.8	-10.1	5.9	(5)
Private new capital expenditure (\$m)	1998-99	2 277	..	-28.7	44 607	..	-3.5	5.1	(5)
Takings, licensed hotels, motels, guest houses and apartments with facilities (\$m)									
	Sep qtr 99	44.0	-0.9	3.5	1 077.8	13.9	8.0	4.1	(6)
Production									
Dwelling unit approvals									
Original (no.)	Nov 99	993	25.1	63.9	15 712	13.0	26.1	6.3	(7)
Trend (no.)	Nov 99	867	3.5	39.8	14 810	0.9	14.5	5.9	(7)
Dwelling units commenced (no.)	Jun qtr 99	1 826	11.0	17.2	36 887	7.2	-4.4	5.0	(8a)
Value of non-residential building approvals (\$m)									
	Nov 99	36.2	14.6	-37.9	989.5	15.4	-12.4	3.7	(7)
Value of total building activity									
Commenced (\$m)	Sep qtr 99	401.2	16.4	14.4	9 204.4	13.9	8.7	4.4	(8)
Work done (\$m)	Sep qtr 99	430.6	24.4	12.3	9 468.8	4.4	9.1	4.5	(8)
Work yet to be done (\$m)	Sep qtr 99	432.4	-4.3	38.9	12 776.1	2.9	-7.4	3.4	(8)
Value of engineering construction work done (\$m)									
	Sep qtr 99	364.0	42.4	48.9	4 368.5	-12.5	1.1	8.3	(9)
Manufacturing production									
Red meat (tonnes)	Sep qtr 99	41 886	-4.6	-3.0	746 511	0.9	-0.7	5.6	(11)
Mineral exploration expenditure (other than for petroleum) (\$m)									
	Sep qtr 99	6.5	-49.2	-48.4	180.1	-7.6	-23.7	3.6	(12)

Indicator	Period	South Australia			Australia			SA as a % of Aust.	Source index
		Number	% change from		Number	% change from			
			Previous period	Same period previous year		Previous period	Same period previous year		
Prices(a)									
CPI—All groups (index no.)	Sep qtr 99	125.1	1.2	1.7	123.4	0.9	1.7	..	(13)
Price index of materials used in house building (index no.)	Dec qtr 99	126.0	0.4	0.6	121.5	0.8	1.5	..	(14)
Price index of materials used in building other than houses (index no.)	Dec qtr 99	115.4	0.2	-0.2	115.4	0.2	0.2	..	(15)
Price index of established houses (index no.)	Sep qtr 99	120.1	3.1	6.2	136.8	1.9	7.8	..	(16)
Price index of project homes (index no.)	Sep qtr 99	121.7	1.6	6.6	117	1.9	5	..	(16)
Labour force and demography									
Population (resident at end qtr) ('000)	Jun qtr 99	1 493.1	0.1	0.5	18 966.8	0.3	1.3	7.9	(17)
Short-term overseas visitor arrivals (no.)	Oct 99	11 864	52.5	70.0	396 979	12.4	11.9	3.0	(21)
Short-term resident departures (no.)	Oct 99	12 265	-20.4	-8.3	261 990	-20.8	-2.2	4.7	(21)
Labour force									
Original ('000)	Dec 99	751.3	3.1	2.4	9 714.0	2.2	2.3	7.7	(18)
Trend ('000)	Dec 99	735.7	0.4	1.8	9 570.7	0.1	1.9	7.7	(18)
Employed persons									
Original ('000)	Dec 99	692.1	2.9	3.7	9 046.8	1.7	2.9	7.7	(18)
Trend ('000)	Dec 99	735.7	0.4	1.8	9 570.7	0.1	1.9	7.7	(18)
Participation rate									
Original(b) (%)	Dec 99	62.5	1.8	1.0	64.3	1.3	0.4	..	(18)
Trend(b) (%)	Dec 99	61.2	0.2	0.6	63.4	0.0	0.3	..	(18)
Unemployment rate									
Original(b) (%)	Dec 99	7.9	0.2	-1.2	6.9	0.5	-0.5	..	(18)
Trend(b) (%)	Dec 99	8.2	0.0	-1.2	6.9	-0.1	-0.7	..	(18)
Job vacancies ('000)	Nov 99	6.3	28.6	5.0	103.2	-6.2	6.2	6.1	(19)
Industrial disputes ('000 working days lost)	Sep 99	0.1	-98.6	-95.5	64.8	-50.2	35.0	0.2	(20)
Income									
Average weekly earnings (full-time adults; ordinary time)									
Original (\$)	Aug 99	702.00	0.3	1.1	751.80	0.1	2.1	..	(22)
Trend (\$)	Aug 99	700.80	0.1	0.8	753.70	0.6	2.5	..	(22)
Wage cost index (total hourly rate excluding bonuses)(c) (index no.)	Sep 99	105.9	1.1	2.6	106.4	0.9	3.0	..	(23)
Financial markets									
Secured housing finance(d) (\$m)	Oct 99	367.0	5.2	54.2	6 600.0	4.1	32.9	5.6	(24)
Finance commitments									
Personal (\$m)	Oct 99	245.0	-8.1	3.4	3 941.0	-8.2	5.1	6.2	(25)
Commercial (\$m)	Oct 99	534.7	13.2	16.9	13 419.3	16.4	-4.7	4.0	(25)
Lease (\$m)	Oct 99	14.7	-25.9	-4.3	648.6	-17.4	-9.9	2.3	(25)
Interest rates									
Banks new housing loans(b) (%)	Dec 99	6.80	0.00	0.30	..	(26)
Bank loans—small, medium business(b)(e) (%)	Dec 99	7.70	0.05	0.15	..	(26)
Bank loans—large business(b) (%)	Dec 99	8.20	0.05	0.25	..	(26)

(a) Base year of each index 1989-90=100.

(b) Change is shown in terms of percentage points.

(c) Base year of index Sep 1997=100.

(d) Excludes alterations and additions. Includes refinancing.

(e) Rate for business loans over \$50,000.

2

STATE SUMMARY

Indicator	Period	NSW	Vic.	Qld	SA	WA	Tas.	NT	ACT	Source index
SELECTED INDICATORS										
CPI—All groups(a) (index no.)	Sep qtr 99	124.1	122.7	124.0	125.1	121.9	123.3	122.9	122.4	(13)
Participation rate trend (%)	Dec 99	61.8	62.9	65.0	61.2	67.3	59.1	69.5	73.2	(18)
Unemployment rate trend (%)	Dec 99	6.1	6.8	8.3	8.2	6.6	9.4	4.5	5.7	(18)
Average weekly earnings (full-time adults; ordinary time) trend (\$)	Aug 99	792.50	743.10	705.10	700.80	760.00	704.40	766.20	845.60	(22)

SELECTED INDICATORS PER HEAD OF POPULATION(b)

State final demand										
Chain volume measures trend (\$'000)	Sep qtr 99	8.3	7.9	7.5	6.9	8.2	6.6	10.4	15.3	(1)
Retail turnover										
Current prices original (\$)	Nov 99	664.7	641.0	656.8	612.8	662.2	587.1	672.4	761.5	(3)
Current prices trend (\$)	Nov 99	654.4	625.9	644.0	600.1	640.5	575.2	669.8	740.6	(3)
New motor vehicle registrations trend (no. per '000 population)	Nov 99	3.4	3.5	2.7	2.6	3.1	2.6	3.7	3.5	(4)
Private new capital expenditure										
Current prices trend (\$)	Sep qtr 99	558.2	599.3	484.3	419.9	815.1	229.7	1 342.8	196.7	(5)
Dwelling unit approvals										
Original (no. per '000 population)	Nov 99	0.699	0.896	0.869	0.665	1.284	0.374	0.995	0.661	(7)
Trend (no. per '000 population)	Nov 99	0.672	0.856	0.819	0.581	1.131	0.313	0.726	0.732	(7)
Secured housing finance(c) (\$)	Oct 99	433.4	325.5	263.9	245.8	399.8	142.5	274.8	419.1	(24)

PERCENTAGE CHANGE FROM PREVIOUS PERIOD

State final demand										
Chain volume measures trend (%)	Jun qtr 99	2.1	1.2	0.8	-0.1	0.6	2.1	-5.9	0.8	(1)
Retail turnover										
Current prices original (%)	Oct 99	3.4	4.8	1.9	6.0	7.4	4.1	1.7	5.1	(3)
Current prices trend (%)	Oct 99	0.8	0.8	0.8	1.6	0.6	0.6	0.4	0.7	(3)
New motor vehicle registrations trend (%)	Oct 99	-1.3	-1.5	-2.3	-1.2	-1.5	-1.1	-0.6	-2.8	(4)
Private new capital expenditure										
Current prices trend (%)	Jun qtr 99	-3.5	-2.4	-5.8	-7.5	-9.5	-0.9	-32.5	-17.0	(5)
Dwelling unit approvals										
Original (%)	Oct 99	-1.4	-6.5	-3.5	-12.5	-11.8	20.7	-5.2	-64.8	(7)
Trend (%)	Oct 99	-0.1	0.6	3.9	2.8	-0.2	0.0	-9.2	7.9	(7)
CPI—All groups (%)	Sep qtr 99	0.9	1.0	0.7	1.2	0.9	0.7	0.2	0.7	(13)
Participation rate trend(d) (%)	Dec 99	-0.1	-0.1	0.0	0.2	0.2	0.1	-0.2	0.1	(18)
Unemployment rate trend(d) (%)	Dec 99	0.0	-0.1	0.1	0.0	-0.1	0.1	0.2	0.0	(18)
Average weekly earnings (full-time adults; ordinary time) trend (%)	Aug 99	0.5	0.8	0.4	0.1	1.0	0.6	1.1	0.4	(22)
Secured housing finance (%)	Oct 99	4.9	4.0	0.3	5.2	8.1	-2.9	-15.9	8.3	(24)

(a) Base year of index 1989-90 = 100.

(b) The latest quarterly estimate of Australian resident population has been used to calculate ratios for subsequent periods.

(c) Excludes alterations and additions. Includes refinancing.

(d) Change is shown in terms of percentage points.

3

STATE ACCOUNTS AT CURRENT PRICES

Period	Final consumption expenditure		Gross fixed capital formation		State final demand	Gross State product (I)	Compensation of employees
	Households	General government	Private	Public			
ANNUAL (\$m)							
1996-97	22 996	7 439	5 755	1 444	37 634	36 967	18 139
1997-98	24 390	7 907	6 705	1 310	40 312	39 652	18 905
1998-99	25 534	8 017	6 173	1 374	41 098	40 573	19 284
QUARTERLY, TREND (\$m)							
1997-98							
June	6 130	2 127	1 624	417	10 298	n.a.	4 701
1998-99							
September	6 281	1 955	1 573	264	10 074	n.a.	4 766
December	6 692	2 097	1 705	318	10 812	n.a.	4 901
March	6 134	1 874	1 360	346	9 714	n.a.	4 695
June	6 259	2 091	1 500	445	10 295	n.a.	4 917
1999-2000							
September	6 476	2 131	1 745	315	10 667	n.a.	4 995

Source: Australian National Accounts: Quarterly State Details (Cat. no. 5206.0.40.001), and Australian National Accounts: State Accounts (Cat. no. 5220.0).

4

STATE ACCOUNTS AT CHAIN VOLUME MEASURES(a)

Period	Final consumption expenditure		Gross fixed capital formation		State final demand	Gross State product (I)
	Households	General government	Private	Public		
ANNUAL (\$m)						
1996-97	23 248	7 513	5 824	1 439	38 020	37 264
1997-98	24 390	7 907	6 714	1 309	40 320	39 652
1998-9	25 200	7 841	6 066	1 386	40 493	40 493
QUARTERLY, TREND (\$m)						
1997-98						
June	6 102	2 116	1 589	417	10 223	n.a.
1998-99						
September	6 225	1 922	1 534	266	9 948	n.a.
December	6 613	2 063	1 664	323	10 664	n.a.
March	6 060	1 812	1 329	351	9 553	n.a.
June	6 139	2 043	1 489	449	10 119	n.a.
1999-2000						
September	6 316	2 065	1 717	323	10 421	n.a.

(a) Reference year for chain volume measures is 1996-97.

Source: Australian National Accounts: Quarterly State Details (Cat. no. 5206.0.40.001), and Australian National Accounts: State Accounts (Cat. no. 5220.0).

5

MERCHANDISE EXPORTS, BY SELECTED COMMODITY GROUP(a)

<i>Period</i>	<i>Meat and meat preparations</i>	<i>Cereals and cereal preparations(b)</i>	<i>Wine</i>	<i>Wool and sheepskins</i>	<i>Machinery</i>	<i>Metals and metal manufactures</i>	<i>Fish and crustaceans</i>	<i>Road vehicles, parts and accessories</i>	<i>Petroleum and petroleum products</i>	<i>Total</i>
	\$'000	\$'000	\$'000	\$'000	\$'000	\$'000	\$'000	\$'000	\$'000	\$'000
1996-97	182 478	745 227	397 949	260 974	378 923	542 204	191 093	655 881	286 458	5 009 345
1997-98	218 252	762 415	564 083	287 824	401 749	574 407	236 353	479 396	237 824	4 986 705
1998-99	198 517	735 352	693 728	212 226	385 165	543 675	252 592	652 010	154 425	5 335 871
1997-98										
June	16 188	83 309	52 876	17 049	25 411	49 813	21 084	24 268	13 434	412 631
1998-99										
July	11 886	51 175	48 323	17 802	37 239	36 741	23 828	44 144	8 909	391 917
August	12 036	83 764	54 365	14 136	30 391	51 467	30 657	43 037	20 669	457 962
September	17 730	84 104	70 084	21 737	30 230	39 773	28 826	82 634	12 086	478 849
October	20 302	57 758	72 262	23 109	28 835	39 298	16 321	45 615	19 012	421 250
November	23 420	34 771	40 014	23 410	33 813	44 046	15 738	76 332	8 740	402 198
December	21 967	84 612	48 409	21 800	39 439	46 039	18 732	72 038	22 904	517 955
January	12 512	93 036	39 131	10 991	20 713	32 232	20 641	17 334	3 544	377 270
February	19 308	43 302	50 984	18 309	29 483	47 209	20 912	23 346	8 932	410 957
March	17 378	73 094	66 841	16 754	29 520	58 757	18 415	102 036	11 714	554 207
April	12 617	38 467	56 286	10 319	41 312	39 915	20 369	26 728	4 080	382 367
May	16 087	42 140	69 509	20 656	34 714	57 271	20 328	28 122	19 003	462 104
June	13 274	49 128	77 522	13 202	29 477	50 927	17 824	90 644	14 832	478 834
1999-00										
July	11 764	32 723	56 428	10 288	29 605	53 201	30 310	41 016	16 088	441 938
August	7 768	39 196	78 607	12 680	27 065	61 879	81 037	97 193	2 428	543 342
September	10 285	56 982	95 021	15 049	37 168	56 988	57 030	59 742	17 842	556 158
October	12 320	56 446	91 425	15 458	29 697	69 747	28 320	65 627	28 792	544 374
November	13 392	11 497	49 891	15 849	30 356	69 803	26 151	140 846	3 439	496 042

(a) Restrictions are placed on the release of statistics for certain commodities for reasons of confidentiality. These restrictions do not affect total export and import figures, but they can affect some items within commodity, industry and country tables. See *International Trade* (Cat. no. 5422.0), Explanatory Notes, paragraph 30, for more details.

(b) The latest 12 months of bulk barley exports data—as included in the Cereals and cereal preparations group—are confidential. Bulk barley details are only included in the data for earlier periods.

Source: Unpublished data, *International Merchandise Trade*.

6

MERCHANDISE EXPORTS, BY SELECTED COUNTRIES(a)

Period	European Union					East Asia				
	Unites States of America	Middle East	United Kingdom	Total European Union	New Zealand	Japan	China	Hong Kong	ASEAN	Total East Asia
	\$'000	\$'000	\$'000	\$'000	\$'000	\$'000	\$'000	\$'000	\$'000	\$'000
1996-97	707 871	563 409	304 645	641 308	382 103	611 870	244 917	234 547	615 943	2 030 435
1997-98	632 203	389 766	424 251	849 932	354 698	612 475	331 489	239 652	491 573	2 023 385
1998-99	705 164	640 412	476 340	928 270	388 967	625 834	302 776	219 536	432 707	1 899 118
1997-98										
June	52 213	30 122	35 019	68 106	31 172	55 368	22 009	14 993	26 900	154 564
1998-99										
July	49 983	36 832	37 794	66 756	36 659	47 898	11 003	19 773	25 676	127 478
August	34 075	33 052	46 093	82 475	33 707	75 232	23 384	16 548	45 343	183 754
September	87 466	53 605	47 456	82 522	32 194	72 491	26 358	16 476	24 026	161 882
October	39 435	43 420	50 012	84 179	31 677	41 429	33 269	20 642	29 472	145 414
November	85 490	33 540	23 911	43 607	29 428	33 475	39 460	19 539	41 004	163 881
December	72 375	108 902	31 536	82 409	31 828	52 344	17 915	25 466	39 024	172 897
January	25 730	91 222	27 983	62 250	20 912	26 299	31 133	16 119	19 791	114 334
February	33 065	39 031	32 558	78 213	29 617	52 745	20 986	21 834	35 769	157 442
March	83 983	87 010	48 802	96 079	34 227	62 499	29 294	17 954	47 444	189 083
April	45 093	34 532	36 364	73 442	29 922	33 779	17 751	15 279	41 850	133 735
May	50 172	41 235	44 124	95 851	31 753	73 576	29 447	16 125	35 990	189 921
June	98 299	38 031	49 708	80 488	47 041	54 066	22 775	13 782	47 319	159 298
1999-00										
July	54 593	31 570	39 127	80 383	39 288	72 238	16 859	15 374	27 998	162 909
August	87 288	50 910	58 622	101 012	46 388	104 011	18 156	13 326	36 471	202 362
September	57 017	41 511	73 174	112 056	44 160	94 485	31 391	22 582	43 563	214 374
October	46 328	79 879	78 282	117 361	49 273	62 170	31 872	25 321	39 996	201 626
November	100 312	82 373	32 967	66 347	39 590	36 084	30 242	22 365	46 502	168 054

(a) Restrictions are placed on the release of statistics for certain commodities for reasons of confidentiality. These restrictions do not affect total export and import figures, but they can affect some items within commodity, industry and country tables. See *International Trade* (Cat. no. 5422.0), Explanatory Notes, paragraph 30, for more details.

Source: Unpublished data, *International Merchandise Trade*.

Period	Manufacturing								Total
	Agriculture, forestry and fishing(b)	Mining	Food, beverages and tobacco	Petroleum, coal, chemical associated product	Metal product	Machinery and equipment	Other manu- facturing	Other industries/ confidential	
	\$'000	\$'000	\$'000	\$'000	\$'000	\$'000	\$'000	\$'000	\$'000
1996-97	1 067 084	202 162	981 918	290 361	569 679	1 140 136	226 780	531 226	5 009 345
1997-98	1 188 938	137 851	1 205 265	292 175	615 344	994 597	262 815	289 719	4 986 705
1998-99	1 158 272	73 125	1 281 990	285 351	581 372	1 175 874	264 774	515 113	5 335 871
1997-98									
June	114 836	10 307	105 051	24 871	52 139	59 884	17 105	28 438	412 631
1998-99									
July	90 460	916	99 279	16 951	42 744	92 690	17 418	31 459	391 917
August	114 502	8 725	100 942	34 630	53 203	90 632	19 941	35 386	457 962
September	115 557	1 066	117 539	26 209	40 577	122 096	21 894	33 912	478 849
October	90 916	9 066	123 467	27 700	41 345	85 546	21 252	21 958	421 250
November	67 563	14 644	90 065	19 311	48 123	123 267	20 329	18 896	402 198
December	117 054	7 760	104 094	32 699	51 955	121 086	22 642	60 664	517 955
January	118 567	1 112	78 750	13 355	33 004	46 525	18 209	67 749	377 270
February	99 744	9 484	102 252	19 255	49 565	63 347	21 822	45 487	410 957
March	121 061	511	114 334	23 276	63 539	145 843	30 604	55 041	554 207
April	62 384	7 741	105 733	14 469	41 171	79 506	26 041	45 321	382 367
May	86 206	8 781	122 596	30 879	61 320	73 034	24 787	54 501	462 104
June	74 256	3 320	122 939	26 617	54 826	132 303	19 834	44 739	478 834
1999-00									
July	63 729	7 380	120 622	26 813	54 438	84 379	19 700	64 876	441 938
August	67 671	9 096	118 344	14 845	63 726	139 116	23 206	107 337	543 342
September	74 357	1 156	168 916	30 593	60 553	115 176	20 107	85 300	556 158
October	85 408	30 427	143 550	28 989	71 232	110 463	23 536	50 769	544 374
November	40 226	7 771	95 895	15 835	72 588	184 231	22 046	57 450	496 042

(a) Restrictions are placed on the release of statistics for certain commodities for reasons of confidentiality. These restrictions do not affect total export and import figures, but they can affect some items within commodity, industry and country tables. See *International Trade* (Cat. no. 5422.0), Explanatory Notes, paragraph 30, for more details.

(b) The latest 12 months of bulk barley exports data—as included in the Agriculture, forestry and fishing group—are confidential. Bulk barley details are only included in the data for earlier periods.

Source: Unpublished data, *International Merchandise Trade*.

8

MERCHANDISE IMPORTS, BY SELECTED COMMODITY GROUP(a)

<i>Period</i>	<i>Food, beverages and tobacco</i>	<i>Petroleum and petroleum products</i>	<i>Chemicals</i>	<i>Textiles</i>	<i>Metals and metal manufactures</i>	<i>Machinery</i>	<i>Road vehicle parts and accessories</i>	<i>Other manufactured goods</i>	<i>Total</i>
	\$'000	\$'000	\$'000	\$'000	\$'000	\$'000	\$'000	\$'000	\$'000
1996-97	136 695	505 633	225 187	79 708	223 259	868 346	538 690	695 238	3 413 043
1997-98	148 771	445 218	274 741	93 815	280 562	1 061 260	772 203	739 266	3 940 198
1998-99	162 784	271 492	281 097	96 052	264 732	917 823	812 096	765 699	3 716 152
1997-98									
June	13 086	15 049	18 431	8 041	25 140	89 988	70 652	62 513	313 741
1998-99									
July	14 293	23 350	13 006	9 514	26 572	95 455	71 756	64 569	329 710
August	15 000	18 697	14 930	8 217	24 495	83 417	67 746	66 505	308 231
September	14 111	12 616	22 609	8 647	25 446	73 876	63 421	63 209	292 070
October	15 828	11 640	18 150	9 116	23 219	82 586	78 648	59 588	310 764
November	15 327	36 487	23 598	7 876	21 420	75 548	70 427	71 943	334 583
December	13 026	16 970	18 804	6 467	19 204	75 018	64 460	59 286	283 700
January	12 745	17 413	35 290	6 819	21 549	79 714	58 788	59 244	306 685
February	11 547	31 555	29 787	7 365	19 645	64 860	68 686	56 383	302 155
March	16 139	26 963	29 953	7 757	23 301	71 981	77 956	79 638	348 969
April	12 634	25 605	34 572	8 490	22 564	67 602	73 535	57 729	314 900
May	9 387	27 892	24 936	8 295	18 148	75 202	49 320	55 967	283 113
June	12 748	22 304	15 461	7 490	19 168	72 562	67 354	71 639	301 272
1999-00									
July	14 835	58 324	16 552	8 454	19 117	82 019	78 748	64 802	355 556
August	12 100	27 827	14 026	8 245	19 964	80 998	72 122	65 046	311 401
September	15 577	92	17 923	8 064	20 823	104 049	68 521	73 997	320 414
October	16 262	42 269	14 475	7 995	19 256	81 629	71 315	69 221	332 813
November	19 779	81 584	18 525	7 815	20 618	75 780	59 462	73 508	369 629

(a) Restrictions are placed on the release of statistics for certain commodities for reasons of confidentiality. These restrictions do not affect total export and import figures, but they can affect some items within commodity, industry and country tables. See *International Trade* (Cat. no. 5422.0), Explanatory Notes, paragraph 30, for more details.

Source: Unpublished data, *International Merchandise Trade*.

9

TURNOVER OF RETAIL ESTABLISHMENTS, BY INDUSTRY—TREND

Period	Food retailing	Department stores	Clothing and soft good retailing	Household good retailing	Recreational good retailing	Other retailing	Hospitality and services	Total
	\$m	\$m	\$m	\$m	\$m	\$m	\$m	\$m
1998-99								
September	382.0	91.6	46.5	81.6	32.3	75.6	128.7	838.8
October	385.3	91.4	46.1	82.3	32.0	76.4	127.2	840.3
November	388.9	91.3	45.6	83.0	31.8	77.5	125.6	843.0
December	392.5	91.3	45.5	83.5	31.8	78.6	124.6	846.3
January	395.0	91.5	45.8	83.6	27.3	79.3	124.4	848.7
February	395.5	91.6	46.5	83.3	27.6	79.5	125.3	848.4
March	394.3	91.3	47.3	82.7	27.6	79.5	126.7	845.8
April	382.3	91.0	48.3	82.3	27.6	79.5	127.8	842.4
May	380.5	90.8	49.2	82.7	27.5	79.7	128.4	840.1
June	380.1	90.9	49.9	84.2	27.5	80.3	128.7	841.7
1999-00								
July	381.5	91.6	50.5	86.6	27.7	81.6	129.7	849.0
August	384.4	92.6	51.2	89.2	28.2	83.6	131.6	860.4
September	387.3	93.8	51.9	91.6	28.7	85.8	133.9	872.8
October	389.9	94.9	52.3	93.7	29.1	87.9	136.4	885.0
November	391.6	95.6	52.6	95.3	29.4	89.9	138.5	896.0

Source: Retail Trade, Australia (Cat. no. 8501.0).

10

NEW MOTOR VEHICLE REGISTRATIONS, BY TYPE OF VEHICLE

Period	Original			Seasonally adjusted			Trend estimate		
	Passenger vehicles	Other vehicles	Total	Passenger vehicles	Other vehicles	Total	Passenger vehicles	Other vehicles	Total
1998-99									
September	3 569	597	4 166	3 577	645	4 222	3 748	667	4 415
October	3 677	560	4 237	3 559	633	4 192	3 618	664	4 282
November	3 803	672	4 475	3 610	679	4 289	3 543	654	4 197
December	3 624	718	4 342	3 513	664	4 177	3 531	638	4 169
January	2 603	442	3 045	3 452	613	4 065	3 561	619	4 180
February	3 355	568	3 923	3 507	607	4 114	3 594	603	4 197
March	4 165	644	4 809	3 927	562	4 489	3 600	598	4 198
April	3 256	559	3 815	3 488	601	4 089	3 564	603	4 167
May	3 294	672	3 966	3 459	619	4 078	3 476	620	4 096
June	3 838	856	4 694	3 386	621	4 007	3 356	644	4 000
1999-00									
July	3 429	689	4 118	3 274	718	3 992	3 240	666	3 906
August	3 149	702	3 851	3 047	741	3 788	3 163	683	3 846
September	3 120	531	3 651	3 039	559	3 598	3 129	695	3 824
October	2 983	676	3 659	3 027	797	3 824	3 128	704	3 832
November	3 656	679	4 335	3 423	684	4 107	3 141	710	3 851

Source: Transport SA.

11

ACTUAL PRIVATE NEW CAPITAL EXPENDITURE, BY SELECTED INDUSTRY AND TYPE OF ASSET

Period	Industry			Total	Type of asset	
	Mining	Manufacturing	Other selected industries		New buildings and structures	Equipment, plant and machinery
ANNUAL (\$m)						
1996-97	489	840	1 251	2 580	595	1 985
1997-98	1 366	820	1 006	3 192	792	2 400
1998-99	508	776	992	2 277	529	1 747
QUARTERLY, ORIGINAL (\$m)						
1997-98						
June	215	217	370	802	250	552
1998-99						
September	125	153	326	603	158	445
December	150	248	266	664	171	493
March	98	187	220	505	97	407
June	136	188	180	504	103	401
1999-00						
September	88	163	393	644	138	506
QUARTERLY, TREND (\$m)						
1997-98						
June	n.a.	n.a.	n.a.	754	213	541
1998-99						
September	n.a.	n.a.	n.a.	673	186	487
December	n.a.	n.a.	n.a.	583	143	440
March	n.a.	n.a.	n.a.	550	119	431
June	n.a.	n.a.	n.a.	572	116	456
1999-00						
September	n.a.	n.a.	n.a.	627	122	505

Source: State Estimates of Private New Capital Expenditure (Cat. no. 5646.0).

12

TOURIST ACCOMMODATION

Period	Hotels with facilities				Motels and guesthouses				Serviced apartments			
	Estab-lish-ments	Guest rooms	Room occu-pancy	Takings	Estab-lish-ments	Guest rooms	Room occu-pancy	Takings	Estab-lish-ments	Guest rooms	Room occu-pancy	Takings
	no.	no.	%	\$'000	no.	no.	%	\$'000	no.	no.	%	\$'000
1997-98												
September	62	3 875	56.2	19 193	150	5 179	51.3	17 420	17	624	57.9	2 714
December	61	3 855	61.3	22 156	151	5 225	57.9	19 960	17	626	67.3	3 269
March	59	3 808	60.1	20 851	149	5 181	57.4	19 247	19	726	67.6	3 913
June	61	4 048	53.6	19 048	147	5 136	52.8	17 773	19	750	59.4	3 551
1998-99												
September	61	4 048	57.2	21 068	146	5 112	51.7	17 805	19	740	56.3	3 667
December	61	4 053	63.0	24 954	146	5 135	58.1	19 990	22	888	66.0	4 884
March	61	4 053	59.6	22 181	145	5 119	55.3	18 793	22	888	65.8	4 516
June	62	4 095	58.6	22 362	146	5 189	51.5	18 140	22	889	54.1	3 947
1999-00												
September	62	3 988	58.0	20 959	146	5 175	50.7	17 812	23	1 084	60.2	5 265

Source: Tourist Accommodation, Australia (Cat. no. 8635.0).

Period	Houses		Total dwelling units		New residential building \$m	Alterations and additions to residential building \$m	Total residential building \$m	Non-residential building \$m	Total building \$m
	Private sector	Total	Private sector	Total					
	no.	no.	no.	no.					
ANNUAL									
1996-97	5 512	5 608	6 148	6 264	515.5	116.6	632.1	580.7	1 212.8
1997-98	6 187	6 380	6 997	7 215	630.2	127.8	758.0	602.2	1 360.1
1998-99	6 568	6 777	7 697	7 928	775.6	143.9	919.6	656.6	1 576.2
MONTHLY, ORIGINAL									
1998-99									
November	540	553	587	606	58.0	12.4	70.4	58.3	128.7
December	489	496	556	563	50.3	10.0	60.3	53.5	113.7
January	361	371	434	444	45.6	9.5	55.1	68.0	123.1
February	494	510	591	607	58.2	12.4	70.6	118.4	189.0
March	644	683	711	750	69.1	14.6	83.7	61.1	144.9
April	487	497	558	568	56.6	10.8	67.4	22.7	90.1
May	601	631	653	683	69.5	11.4	80.9	57.4	138.3
June	652	673	814	845	72.3	16.5	88.8	31.7	120.5
1999-00									
July	615	620	837	842	101.8	14.1	115.9	31.7	147.6
August	663	669	765	771	76.4	15.5	91.9	37.5	129.4
September	731	772	866	907	88.5	15.9	104.3	49.2	153.5
October	667	681	777	794	79.6	14.0	93.7	31.6	125.2
November	892	904	981	993	101.4	15.5	116.9	36.2	153.1
MONTHLY, TREND									
1998-99									
November	534	553	597	620	56.4	11.2	67.6	64.2	131.7
December	530	548	597	620	57.3	11.5	68.8	63.9	132.7
January	531	549	606	629	59.0	11.9	70.8	61.7	132.6
February	536	555	620	642	61.3	12.3	73.6	57.9	131.5
March	543	561	634	655	64.0	12.7	76.7	53.1	129.8
April	551	569	651	670	67.0	13.2	80.1	47.1	127.2
May	559	576	670	687	69.8	13.6	83.4	41.0	124.4
June	573	589	693	708	72.6	14.0	86.6	36.7	123.3
1999-00									
July	597	613	721	735	75.5	14.2	89.7	34.9	124.6
August	631	547	752	768	78.3	14.3	92.6	34.9	127.5
September	675	692	785	802	81.2	14.3	95.4	36.0	131.5
October	721	739	819	838	84.0	14.2	98.2	38.1	136.3
November	764	781	846	867	86.6	14.1	100.7	39.7	140.5

Source: Building Approvals, South Australia (Cat. no. 8731.4).

14

BUILDING COMMENCEMENTS

Period	New houses		Total dwelling units(a)		New residential building \$m	Alterations and additions to residential building \$m	Non-residential building		
	Private sector	Total	Private sector	Total			Private sector	Total	Total building
	no.	no.	no.	no.			\$m	\$m	\$m
1996-97	5 057	5 112	5 727	5 789	496.3	116.9	423.4	568.7	1 181.9
1997-98	5 628	5 823	6 437	6 653	614.7	134.5	426.4	550.7	1 299.9
1998-98	6 091	6 296	7 186	7 416	771.3	139.7	400.1	623.7	1 534.7
1997-98									
September	1 354	1 402	1 489	1 541	131.9	31.6	84.5	112.3	275.8
December	1 531	1 588	1 841	1 906	179.8	33.8	139.2	174.1	387.7
March	1 409	1 436	1 617	1 648	150.1	38.7	68.1	95.2	284.0
June	1 334	1 397	1 490	1 558	152.9	30.4	134.5	169.1	352.4
1998-99									
September	1 563	1 610	1 927	1 980	184.7	35.0	89.5	131.1	350.7
December	1 644	1 699	1 891	1 965	231.1	34.3	94.6	134.8	400.2
March	1 293	1 326	1 612	1 645	171.6	32.7	145.6	235.5	439.8
June	1 591	1 661	1 756	1 826	183.9	37.8	71.0	122.9	344.6
1999-2000									
September	1 741	1 781	2 103	2 153	250.0	42.6	83.4	108.7	401.2

(a) Includes conversions.

Source: *Building Activity, South Australia* (Cat. no. 8752.4).

VALUE OF BUILDING WORK DONE AND COMPLETED DURING PERIOD

Period	New houses		New residential building			Non-residential building		Total building		
	Private sector	Total	Private sector	Total	Alterations and additions to residential building	Total residential building	Private sector	Total	Private sector	Total
	\$m	\$m	\$m	\$m	\$m	\$m	\$m	\$m	\$m	\$m
VALUE OF BUILDING WORK DONE										
1996-97	433.9	438.9	485.2	490.4	122.3	612.7	444.2	663.3	1 049.8	1 275.9
1997-98	522.9	535.7	590.4	605.4	131.6	737.0	538.9	685.0	1 259.3	1 422.0
1998-98	599.4	614.6	720.8	737.7	147.7	885.4	417.1	571.6	1 283.8	1 457.0
1997-98										
September	122.5	125.8	136.3	139.9	32.9	172.8	149.8	186.7	318.5	359.4
December	134.0	137.7	152.3	157.1	36.2	193.3	157.7	197.7	345.2	391.0
March	130.5	132.8	147.4	149.9	31.4	181.3	119.1	149.2	297.7	330.4
June	135.9	139.4	154.5	158.5	31.2	189.7	112.3	151.5	297.9	341.1
1998-99										
September	150.9	155.8	175.8	180.9	39.8	220.7	135.5	162.9	350.5	383.6
December	151.4	155.1	185.6	189.9	40.3	230.1	121.5	160.4	347.0	390.6
March	142.4	144.9	169.5	172.5	33.2	205.7	87.5	131.1	290.1	336.8
June	154.7	158.9	189.9	194.4	34.4	228.9	72.6	117.2	296.2	346.1
1999-2000										
September	166.6	171.5	212.4	218.0	41.1	259.1	116.8	171.6	369.3	430.6
VALUE OF BUILDING WORK COMPLETED										
1996-97	408.9	414.1	461.8	467.1	123.6	590.7	328.2	584.3	911.8	1 175.0
1997-98	504.1	514.7	561.8	574.7	125.0	699.7	571.2	744.0	1 256.3	1 443.7
1998-98	600.6	614.8	700.0	715.2	153.2	868.4	505.3	639.4	1 356.8	1 507.8
1997-98										
September	118.3	120.5	130.5	132.7	34.3	166.9	68.9	102.6	233.1	269.5
December	148.3	151.6	168.9	172.8	39.2	212.1	310.5	369.2	517.7	581.2
March	112.2	114.5	126.4	129.3	26.9	156.3	81.7	124.3	235.0	280.5
June	125.3	128.1	136.0	139.8	24.6	164.4	110.1	148.0	270.6	312.5
1998-99										
September	148.1	152.4	161.1	165.8	36.1	201.9	68.2	106.7	264.9	308.6
December	168.4	174.1	190.2	196.1	49.3	245.4	174.9	203.3	414.1	448.7
March	145.1	147.6	180.1	183.0	36.7	219.7	161.3	207.4	377.8	427.1
June	139.0	140.7	168.6	170.3	31.0	201.4	101.0	122.0	300.0	323.3
1999-2000										
September	148.6	153.6	169.6	176.3	38.0	214.3	67.1	97.3	274.0	311.6

Source: Building Activity, South Australia (Cat. no. 8752.4).

<i>Period</i>	<i>Pigmeat</i>	<i>Beef</i>	<i>Mutton</i>	<i>Lamb</i>	<i>Gas</i>	<i>Coal(a)</i>	<i>Sawn timber(b)</i>
	<i>tonnes</i>	<i>tonnes</i>	<i>tonnes</i>	<i>tonnes</i>	<i>m MJ</i>	<i>tonnes</i>	<i>m³</i>
1996-97	29 842	85 478	51 778	34 890	76 495	2 633 820	333 691
1997-98	26 384	80 924	58 554	38 224	78 441	2 815 870	361 257
1998-99	25 203	61 873	47 780	43 449	86 228	2 686 069	374 590
1997-98							
September	7 431	18 704	10 889	6 594	21 942	752 868	91 537
December	6 301	22 324	16 769	9 963	18 997	610 208	83 957
March	6 731	21 110	20 144	10 561	18 098	718 990	89 540
June	7 923	18 786	10 752	11 106	19 404	733 804	96 223
1998-99							
September	6 782	15 160	10 348	10 738	23 573	748 575	95 339
December	7 269	17 609	15 737	10 997	19 718	671 040	94 578
March	8 031	14 780	14 029	10 101	19 343	826 095	88 282
June	8 782	14 717	7 915	12 337	23 594	440 359	96 391
1999-00							
September	7 709	16 871	5 654	11 492	22 162	783 227	111 075

(a) Data supplied by Flinders Power Pty Ltd.

(b) From Australian softwood logs only.

Source: *Livestock Products, Australia (Cat. no. 8752.4); Unpublished data, Manufacturing Production.*

<i>Period</i>	<i>Food</i>	<i>Clothing</i>	<i>Housing</i>	<i>Household equipment and operation</i>	<i>Transport- ation</i>	<i>Tobacco and alcohol</i>	<i>Health and personal care</i>	<i>Recreation and education</i>	<i>All groups</i>
ANNUAL AVERAGE (1989-90 = 100.0)									
1996-97	120.8	105.5	98.9	113.4	124.6	165.3	165.4	121.1	122.3
1997-98	122.7	105.7	90.7	113.7	122.1	169.3	165.4	124.7	121.6
1998-99	127.7	105.0	92.0	113.3	121.6	171.8	164.2	127.5	123.2
QUARTERLY (1989-90 = 100.0)									
1997-98									
June	123.7	105.9	90.3	113.9	121.8	170.5	171.1	126.1	122.4
1998-99									
September	125.9	105.3	91.2	113.7	121.8	170.7	171.8	125.9	123.0
December	128.2	105.4	91.9	113.9	121.3	171.4	170.9	126.5	123.6
March	128.0	103.7	92.2	112.3	120.9	171.8	156.6	128.6	122.7
June	128.8	105.7	92.8	113.2	122.4	173.3	157.5	128.9	123.6
1999-00									
September	129.7	104.8	95.0	112.5	127.8	174.4	157.6	129.8	125.1
PERCENTAGE CHANGE FROM SAME QUARTER OF PREVIOUS YEAR									
1997-98									
June	1.5	0.7	-4.0	0.3	-0.7	2.4	1.8	2.6	0.4
1998-99									
September	3.2	-0.1	-1.1	0.1	-1.1	2.1	8.3	1.8	1.5
December	5.1	-0.8	1.9	0.3	-0.8	1.5	4.1	2.3	2.0
March	4.1	-1.3	2.6	-1.2	-0.2	0.6	-6.7	2.5	0.8
June	4.1	-0.2	2.8	-0.6	0.5	1.6	-7.9	2.2	1.0
1999-00									
September	3.0	-0.5	4.2	-1.1	4.9	2.2	-8.3	3.1	1.7
PERCENTAGE CHANGE FROM PREVIOUS QUARTER									
1997-98									
June	0.7	0.8	0.4	0.2	0.5	-0.1	2.0	0.5	0.6
1998-99									
September	1.8	-0.6	1.0	-0.2	0.0	0.1	0.4	-0.2	0.5
December	1.8	0.1	0.8	0.2	-0.4	0.4	-0.5	0.5	0.5
March	-0.2	-1.6	0.3	-1.4	-0.3	0.2	-8.4	1.7	-0.7
June	0.6	1.9	0.7	0.8	1.2	0.9	0.6	0.2	0.7
1999-00									
September	0.7	-0.9	2.4	-0.6	4.4	0.6	0.1	0.7	1.2

Source: Consumer Price Index (Cat. no. 6401.0).

18

ESTIMATED RESIDENT POPULATION AND COMPONENTS OF POPULATION CHANGE

Period	Net migration			Total increase	Population at end of period
	Natural increase	Interstate	Overseas(a)		
1996-97	6 951	-4 628	3 104	5 427	1 479 680
1997-98	6 602	-3 254	3 390	7 638	1 486 418
1998-99	6 593	-2 869	2 932	6 656	1 493 074
1997-98					
September	1 407	-755	1 029	1 681	1 481 361
December	1 650	-1 098	519	1 071	1 482 432
March	2 074	-591	1 291	2 744	1 485 206
June	1 471	-810	551	1 212	1 486 418
1998-99					
September	1 188	-422	778	1 544	1 487 962
December	1 775	-901	707	1 581	1 489 543
March	1 917	-682	1 149	2 384	1 491 927
June	1 713	-864	298	1 147	1 493 074

(a) Includes category jumping.

Source: Australian Demographic Statistics (Cat. no. 3101.0).

19

BIRTHS, DEATHS, MARRIAGES AND DIVORCES

Period	Registrations			
	Births	Deaths	Marriages	Divorces
1996-97	18 576	11 625	8 003	4 362
1997-98	18 330	11 728	7 988	4 113
1998-99	18 277	11 684	8 033	4 201
1997-98	—	—	—	—
September	4 713	3 306	1 079	1 034
December	4 539	2 889	2 680	1 058
March	4 599	2 525	2 405	1 016
June	4 479	3 008	1 824	1 005
1998-99				
September	4 648	3 460	1 294	1 053
December	4 545	2 770	2 499	1 085
March	4 545	2 573	2 471	929
June	4 594	2 881	1 769	1 134

Source: Australian Demographic Statistics (Cat. no. 3101.0).

Period	Employed full-time		Employed part-time		Total employed		Unemployed		Labour force	
	Males	Females	Males	Females	Males	Females	Males	Females	Males	Females
ANNUAL AVERAGE ('000)										
1996-97	320.8	150.5	48.6	140.7	369.4	291.2	42.1	27.5	411.5	318.7
1997-98	317.5	145.9	48.8	136.4	366.3	282.3	42.1	28.8	408.4	311.0
1998-99	319.4	148.1	49.2	136.2	368.6	284.3	40.2	26.6	408.8	310.9
MONTHLY, ORIGINAL ('000)										
1998-99										
October	318.8	148.8	47.1	137.7	366.0	286.4	40.5	24.1	406.5	310.5
November	320.5	147.1	46.6	139.0	367.1	286.1	42.7	25.2	409.8	311.4
December	323.6	150.8	51.0	141.7	374.6	292.5	42.1	24.7	416.6	317.3
January	315.4	147.2	49.5	131.2	364.9	278.4	45.4	29.5	410.3	308.0
February	320.7	150.6	51.1	134.4	371.8	285.0	40.6	28.3	412.4	313.3
March	322.9	147.4	48.0	141.1	370.8	288.5	38.6	27.7	409.4	316.2
April	316.4	149.2	50.9	138.6	367.4	287.8	35.2	24.0	402.5	311.8
May	318.6	152.9	53.7	132.8	372.3	285.7	36.6	27.2	408.9	312.9
June	319.3	146.3	55.9	141.8	375.3	288.1	31.0	25.0	406.3	313.1
1999-00										
July	320.3	152.1	53.7	137.4	374.0	289.5	30.7	23.6	404.7	313.1
August	315.4	151.1	56.0	137.4	371.3	288.5	36.5	24.5	407.9	313.0
September	317.6	150.9	56.6	144.0	374.2	294.9	34.1	26.4	408.3	321.3
October	313.7	153.7	59.4	138.8	373.1	292.5	37.4	25.0	410.5	317.5
November	317.5	153.7	55.0	146.7	372.5	300.4	34.4	21.5	406.8	321.9
December	326.8	160.3	59.7	145.3	386.6	305.6	35.0	24.2	421.6	329.8
MONTHLY, TREND ('000)										
1998-99										
October	318.5	147.2	47.9	136.4	366.4	283.6	43.0	26.9	409.4	310.5
November	318.5	147.2	48.9	138.8	367.4	286.0	42.5	26.2	409.9	312.2
December	318.5	147.2	49.6	139.9	368.2	287.2	41.8	25.8	410.0	312.9
January	319.4	147.5	49.6	140.0	369.0	287.5	40.8	25.6	409.8	313.1
February	320.3	148.2	49.5	139.0	369.8	287.2	39.5	25.7	409.3	312.9
March	321.2	149.1	49.6	137.7	370.8	286.8	38.0	25.7	408.8	312.5
April	321.5	150.1	50.2	136.5	371.7	286.6	36.4	25.7	408.1	312.3
May	321.1	150.9	51.5	135.8	372.6	286.7	35.2	25.8	407.8	312.5
June	319.8	151.4	53.4	135.8	373.2	287.2	34.5	25.9	407.8	313.3
1999-00										
July	318.3	151.7	55.1	136.7	373.4	288.4	34.4	26.0	408.0	314.4
August	317.1	152.1	56.5	138.1	373.6	290.2	34.6	25.9	408.3	316.1
September	316.4	152.6	57.3	139.8	373.7	292.4	35.0	25.6	408.4	318.0
October	316.0	153.2	57.9	141.7	374.1	294.9	35.4	25.2	408.5	320.1
November	315.9	153.8	58.1	143.6	374.0	297.4	35.7	24.7	410.4	322.1
December	316.3	154.6	59.3	145.0	375.6	299.6	36.0	24.4	411.6	324.0

(a) Population aged 15 and over.

Source: Labour Force, Australia, Preliminary (Cat. no. 6202.0).

Period	Civilian population			Unemployment rate			Participation rate		
	Males aged 15 and over	Females aged 15 and over	Persons aged 15-19	Males all ages	Females all ages	Persons all ages	Males	Females	Persons
	'000	'000	%	%	%	%	%	%	%
ANNUAL AVERAGE									
1996-97	579.8	600.6	23.7	10.2	8.6	9.5	71.0	53.1	61.9
1997-98	583.9	604.5	23.2	10.3	9.2	9.8	70.8	51.5	61.0
1998-99	583.2	609.8	21.7	9.8	8.6	9.3	70.1	51.0	60.3
MONTHLY, ORIGINAL									
1998-99									
October	582.2	608.8	23.1	10.0	7.8	9.0	69.8	51.0	60.2
November	582.6	609.2	21.2	10.4	8.1	9.4	70.3	51.1	60.5
December	583.0	609.7	19.8	10.1	7.8	9.1	71.5	52.0	61.5
January	583.4	610.1	20.1	11.1	9.6	10.4	70.3	50.5	60.2
February	583.8	610.5	20.4	9.8	9.0	9.5	70.6	51.3	60.8
March	584.2	610.9	21.8	9.4	8.8	9.1	70.1	51.8	60.7
April	584.6	611.3	17.9	8.7	7.7	8.3	68.9	51.0	59.7
May	585.0	611.6	24.8	8.9	8.7	8.8	69.9	51.2	60.3
June	585.3	611.9	21.6	7.6	8.0	7.8	69.4	51.2	60.1
1999-00									
July	585.7	612.3	21.4	7.6	7.5	7.6	69.1	51.1	59.9
August	586.0	612.6	22.1	9.0	7.8	8.5	69.6	51.1	60.1
September	586.4	613.0	20.6	8.4	8.2	8.3	69.6	52.4	60.8
October	586.8	613.3	21.1	9.1	7.9	8.6	70.0	51.8	60.7
November	587.1	613.6	22.1	8.5	6.7	7.7	69.3	52.5	60.7
December	587.5	613.8	20.0	8.3	7.3	7.9	71.8	53.7	62.5
MONTHLY, TREND									
1998-99									
October	n.a.	n.a.	n.a.	10.5	8.7	9.7	70.3	51.0	60.5
November	n.a.	n.a.	n.a.	10.4	8.4	9.5	70.4	51.2	60.6
December	n.a.	n.a.	n.a.	10.2	8.2	9.4	70.3	51.3	60.6
January	n.a.	n.a.	n.a.	10.0	8.2	9.2	70.2	51.3	60.6
February	n.a.	n.a.	n.a.	9.7	8.2	9.0	70.1	51.2	60.5
March	n.a.	n.a.	n.a.	9.3	8.2	8.8	70.0	51.2	60.3
April	n.a.	n.a.	n.a.	8.9	8.2	8.6	69.8	51.1	60.2
May	n.a.	n.a.	n.a.	8.6	8.3	8.5	69.7	51.1	60.2
June	n.a.	n.a.	n.a.	8.5	8.3	8.4	69.6	51.2	60.2
1999-00									
July	n.a.	n.a.	n.a.	8.4	8.3	8.4	69.6	51.3	60.3
August	n.a.	n.a.	n.a.	8.5	8.2	8.4	69.6	51.6	60.4
September	n.a.	n.a.	n.a.	8.6	8.0	8.3	69.7	51.9	60.6
October	n.a.	n.a.	n.a.	8.6	7.9	8.3	69.8	52.2	60.8
November	n.a.	n.a.	n.a.	8.7	7.7	8.2	69.9	52.5	61.0
December	n.a.	n.a.	n.a.	8.7	7.5	8.2	70.1	52.8	61.2

(a) Population aged 15 and over.

Source: Labour Force, Australia, Preliminary (Cat. no. 6202.0).

AVERAGE WEEKLY EARNINGS OF EMPLOYEES

Period	Males			Females			Persons		
	Full-time adult ordinary time earnings	Full-time adult total earnings	All males total earnings	Full-time adult ordinary time earnings	Full-time adult total earnings	All females total earnings	Full-time adult ordinary time earnings	Full-time adult total earnings	All employees total earnings
ANNUAL AVERAGE (\$ per week)									
1996-97	678.20	735.10	636.90	575.10	589.40	408.70	644.30	687.20	529.80
1997-98	705.60	755.05	646.28	606.05	619.33	438.50	670.53	707.20	545.70
1998-99	741.20	797.55	678.28	627.93	647.28	464.35	699.13	741.70	575.23
QUARTERLY, ORIGINAL (\$ per week)									
1997-98									
15 May	713.80	759.50	646.30	620.10	634.30	452.40	680.10	714.40	552.80
1998-99									
21 August	737.50	785.60	670.40	623.50	636.30	462.10	694.70	729.60	569.60
20 November	745.20	811.60	679.00	631.50	652.90	471.50	702.50	752.00	580.30
19 February	739.90	796.20	677.40	632.00	651.90	466.50	699.60	742.30	574.90
21 May	742.20	796.80	686.30	624.70	648.00	457.30	699.70	742.90	576.10
1999-00									
August	742.70	792.00	669.30	631.20	655.70	451.20	702.00	742.00	560.40
QUARTERLY, TREND (\$ per week)									
1997-98									
15 May	720.20	768.70	653.80	623.20	638.00	454.20	684.90	720.80	556.70
1998-99									
21 August	734.30	788.10	668.30	627.90	643.90	463.80	694.90	734.60	570.10
20 November	742.10	798.30	677.20	629.10	647.10	467.80	699.10	741.70	576.60
19 February	742.90	800.20	679.70	629.00	649.60	465.20	700.40	744.20	576.10
21 May	741.10	796.40	676.60	628.70	652.20	458.00	700.20	743.50	570.00
1999-00									
20 August	739.60	792.70	673.60	269.50	656.10	450.70	700.80	743.40	563.80

Source: Average Weekly Earnings, States and Australia (Cat. no. 6302.0).

23

SECURED HOUSING FINANCE COMMITMENTS

Period	Original		Seasonally adjusted		Trend	
	Dwelling units	Value	Dwelling units	Value	Dwelling units	Value
	no.	\$m	no.	\$m	no.	\$m
1998-99						
August	2 787	233	2 978	252	3 003	260
September	2 807	242	2 896	250	2 941	257
October	2 685	238	2 814	251	2 907	258
November	3 000	278	2 885	265	2 913	261
December	3 151	294	3 083	279	2 949	267
January	2 392	216	2 964	268	2 998	273
February	3 019	274	3 045	277	3 050	279
March	3 718	344	3 134	289	3 107	285
April	3 162	290	3 138	288	3 167	293
May	3 237	301	3 226	301	3 243	304
June	3 592	342	3 335	321	3 344	318
1999-00						
July	3 397	319	3 502	332	3 462	333
August	3 419	331	3 561	349	3 589	349
September	3 545	349	3 573	354	3 715	365
October	3 684	367	4 080	404	3 832	380

Source: Housing Finance for Owner Occupation, Australia (Cat. no. 5609.0).

24

FINANCE COMMITMENTS

Period	Commercial finance commitments			Personal finance commitments			
	Fixed loan facilities	Revolving credit facilities	Total commercial finance commitments	Fixed loan facilities	Revolving credit facilities	Total personal finance commitments	Total lease finance commitments
	\$m	\$m	\$m	\$m	\$m	\$m	\$m
1998-99							
August	258.0	232.4	490.4	103.9	144.2	248.1	15.5
September	362.1	306.9	669.0	117.2	131.7	248.8	16.4
October	275.6	181.7	457.3	108.8	128.2	237.0	15.3
November	355.3	166.0	521.2	116.2	140.0	256.2	22.6
December	305.8	268.2	574.0	119.0	155.1	274.2	17.4
January	189.3	120.6	309.9	119.0	117.6	236.6	21.8
February	288.2	199.0	487.3	122.3	133.2	255.5	19.3
March	489.8	390.3	880.1	147.2	174.1	321.3	24.6
April	268.6	459.1	727.7	113.0	138.9	251.9	32.8
May	272.4	202.3	474.7	120.9	131.5	252.5	39.3
June	356.6	382.2	738.9	135.0	140.7	275.7	40.6
1999-00							
July	253.4	261.8	515.2	122.6	132.1	254.7	23.4
August	412.9	255.3	668.3	124.3	127.6	251.9	26.6
September	265.9	206.5	472.4	126.6	140.0	266.6	19.8
October	324.9	209.8	534.7	123.9	121.1	245.0	14.7

Source: Unpublished data, PC Ausstats.

PUBLICATIONS SOURCE INDEX

- (1) *Australian National Accounts, Quarterly State Details*
(Cat. no. 5206.0.40.001)
- (2) *International Merchandise Trade, Australia*
(Cat. no. 5422.0) Quarterly
- (3) *Retail Trade, Australia* (Cat. no. 8501.0) Monthly
- (4) *New Motor Vehicles Registrations, Australia, Preliminary*
(Cat. no. 9301.0) Monthly
- (5) *State Estimates of Private New Capital Expenditure*
(Cat. no. 5646.0) Quarterly
- (6) *Tourist Accommodation, Australia* (Cat. no. 8635.0) Quarterly
- (7) *Building Approvals, Australia* (Cat. no. 8731.0) Monthly
- (8) *Building Activity, Australia* (Cat. no. 8752.0) Quarterly
- (8a) *Building Activity, Australia, Dwelling Unit Commencements, Preliminary* (Cat. no. 8750.0) Quarterly
- (9) *Engineering Construction Activity, Australia*
(Cat. no. 8762.0) Quarterly
- (10) *Manufacturing Production, Australia, Preliminary*
(Cat. no. 8301.0) Quarterly
- (11) *Livestock Products, Australia* (Cat. no. 7215.0) Quarterly
- (12) *Actual and Expected Private Mineral Exploration, Australia*
(Cat. no. 8412.0) Quarterly
- (13) *Consumer Price Index* (Cat. no. 6401.0) Quarterly
- (14) *Price Index of Materials Used in House Building, Six State Capital Cities and Canberra* (Cat. no. 6408.0) Quarterly
- (15) *Price Index of Materials Used in Building Other Than House Building, Six State Capital Cities and Canberra*
(Cat. no. 6407.0) Quarterly
- (16) *House Price Indexes: Eight Capital Cities*
(Cat. no. 6416.0) Quarterly
- (17) *Australian Demographic Statistics* (Cat. no. 3101.0) Quarterly
- (18) *Labour Force, Australia, Preliminary* (Cat. no. 6202.0) Monthly
- (19) *Job Vacancies, Australia* (Cat. no. 6354.0) Quarterly
- (20) *Industrial Disputes, Australia* (Cat. no. 6321.0) Monthly
- (21) Unpublished overseas arrival and departure statistics
- (22) *Average Weekly Earnings, States and Australia*
(Cat. no. 6302.0) Quarterly
- (23) *Wage Cost Index, Australia* (Cat. no. 6345.0) Quarterly
- (24) *Housing Finance for Owner Occupation, Australia*
(Cat. no. 5609.0) Monthly
- (25) Unpublished statistics available from PC AUSSTATS
- (26) *Reserve Bank of Australia Bulletin*

SELF-HELP ACCESS TO STATISTICS

- CPI INFOLINE* For current and historical Consumer Price Index data, call 1902 981 074 (call cost 75c per minute).
- DIAL-A-STATISTIC* For the latest figures for National Accounts, Balance of Payments, Labour Force, Average Weekly Earnings, Estimated Resident Population and the Consumer Price Index call 1900 986 400 (call cost 75c per minute).
- INTERNET* www.abs.gov.au
- LIBRARY* A range of ABS publications is available from public and tertiary libraries Australia-wide. Contact your nearest library to determine whether it has the ABS statistics you require.

WHY NOT SUBSCRIBE?

- PHONE* +61 1300 366 323
- FAX* +61 03 9615 7848

CONSULTANCY SERVICES

ABS offers consultancy services on a user pays basis to help you access published and unpublished data. Data that is already published and can be provided within 5 minutes is free of charge. Statistical methodological services are also available. Please contact:

<i>INQUIRIES</i>	<i>City</i>	<i>By phone</i>	<i>By fax</i>
	Canberra	02 6252 6627	02 6207 0282
	Sydney	02 9268 4611	02 9268 4668
	Melbourne	03 9615 7755	03 9615 7798
	Brisbane	07 3222 6351	07 3222 6283
	Perth	08 9360 5140	08 9360 5955
	Adelaide	08 8237 7400	08 8237 7566
	Hobart	03 6222 5800	03 6222 5995
	Darwin	08 8943 2111	08 8981 1218

POST Client Services, ABS, PO Box 10, Belconnen ACT 2616

EMAIL client.services@abs.gov.au



2130740002007
ISSN 1039-8880

RRP \$17.00